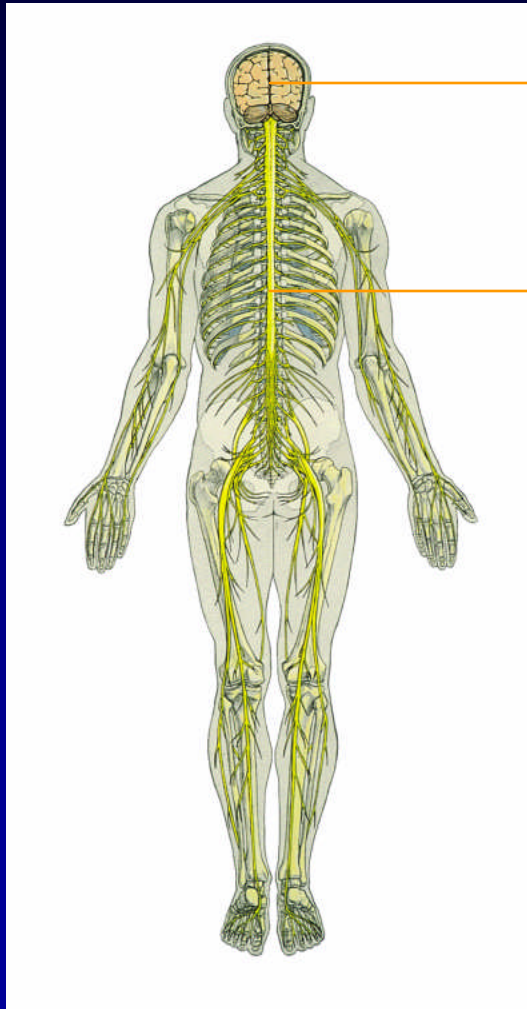


Chapter 2

Understanding the Human Body

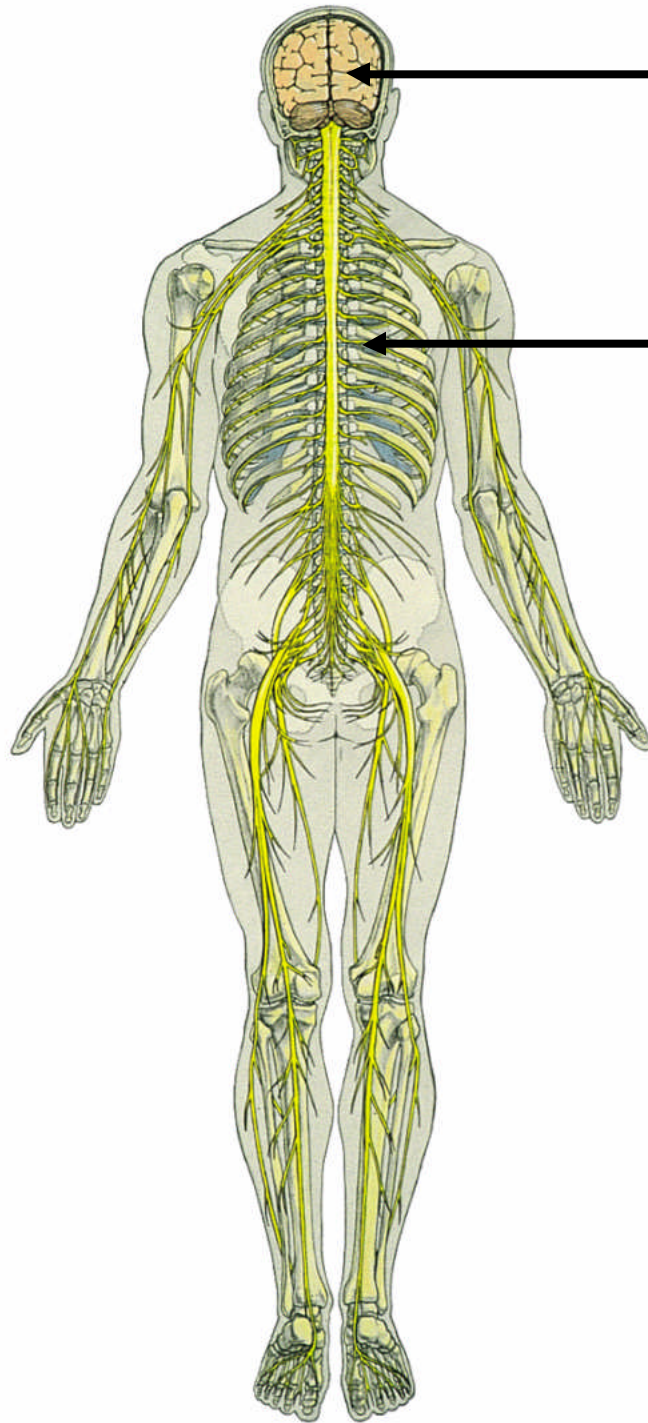
- Nervous System
- Respiratory System
- Circulatory System

Human Nervous System



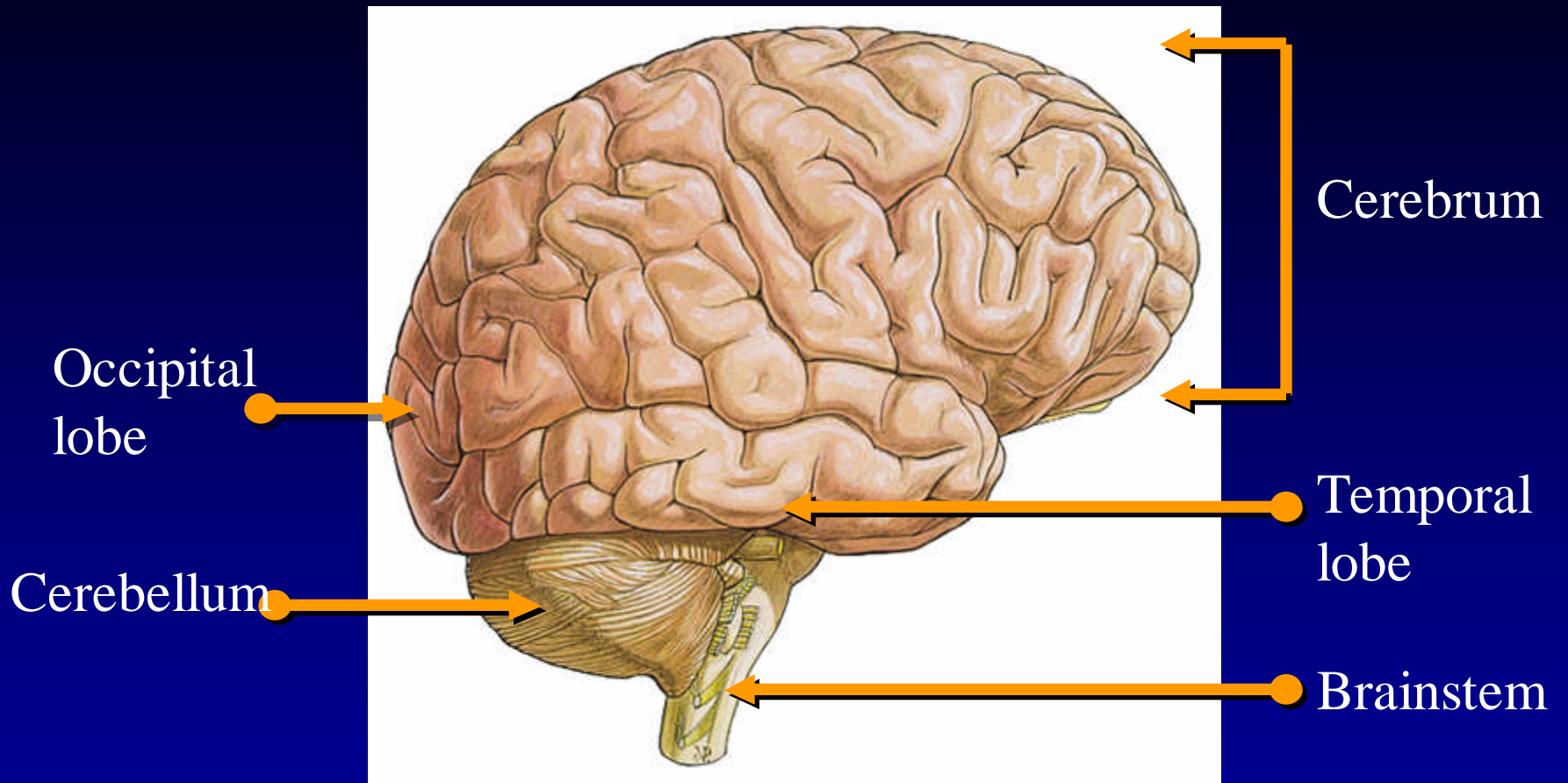
Brain

Spinal cord

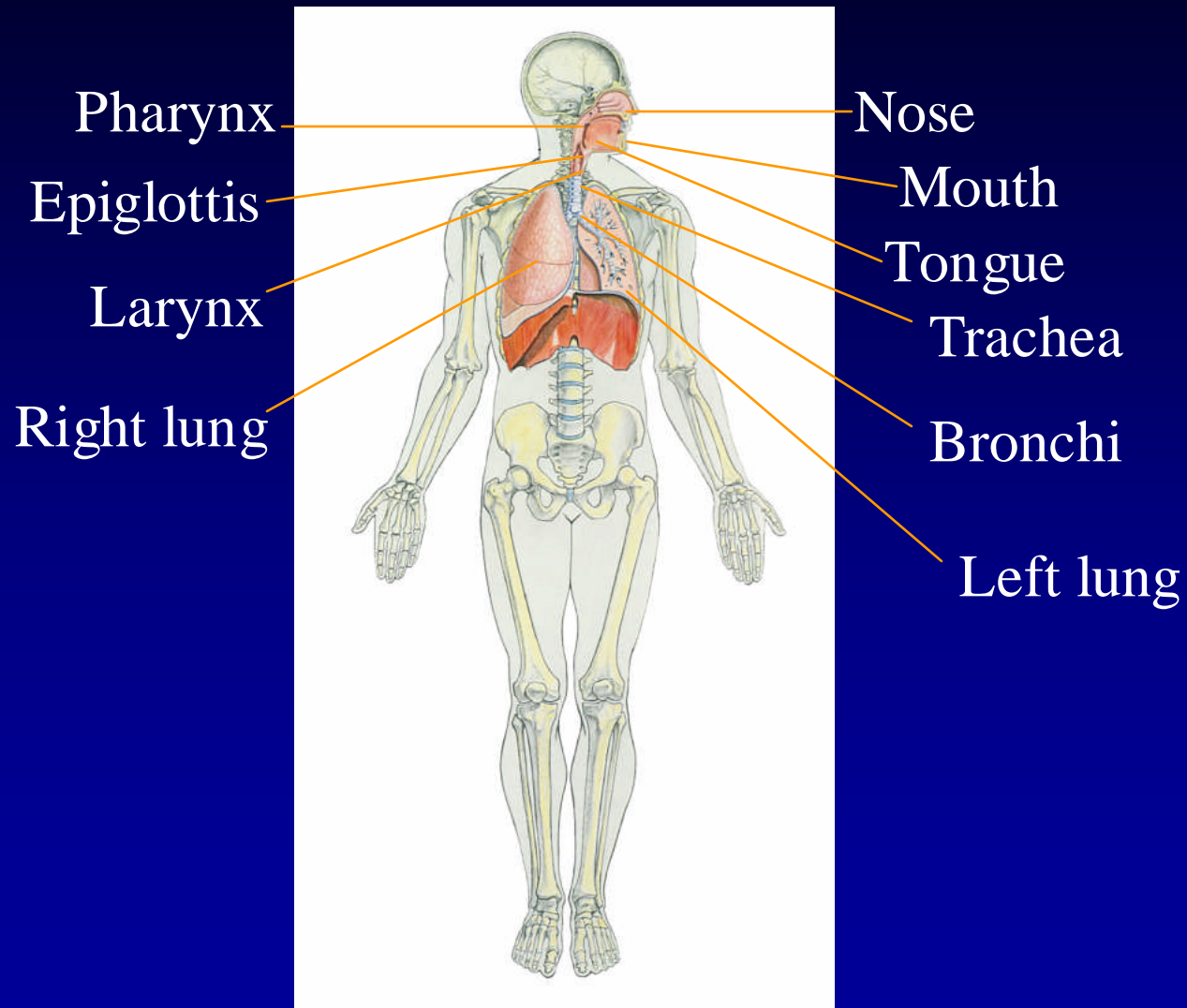


Brain

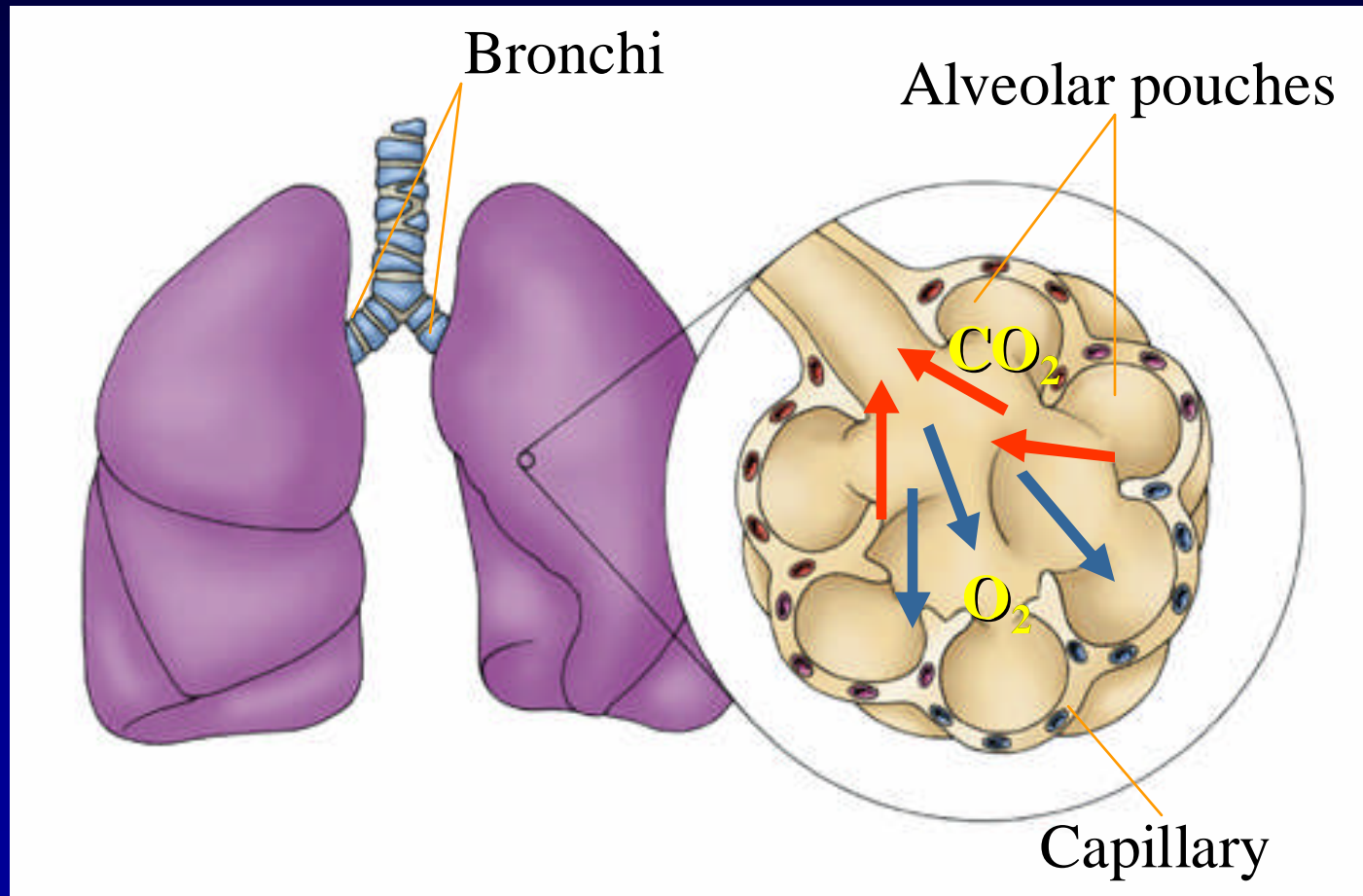
Spinal cord



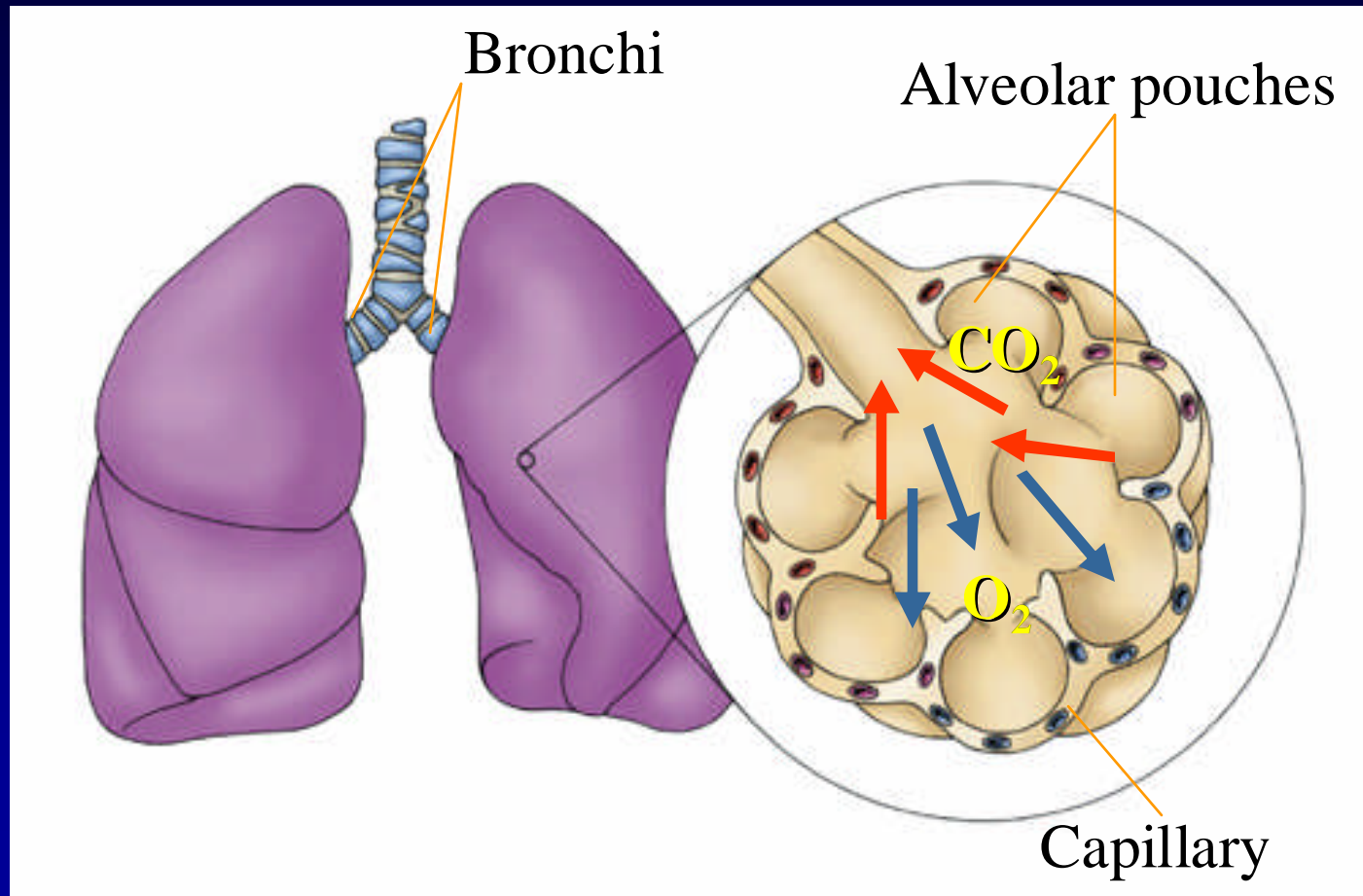
Respiratory System



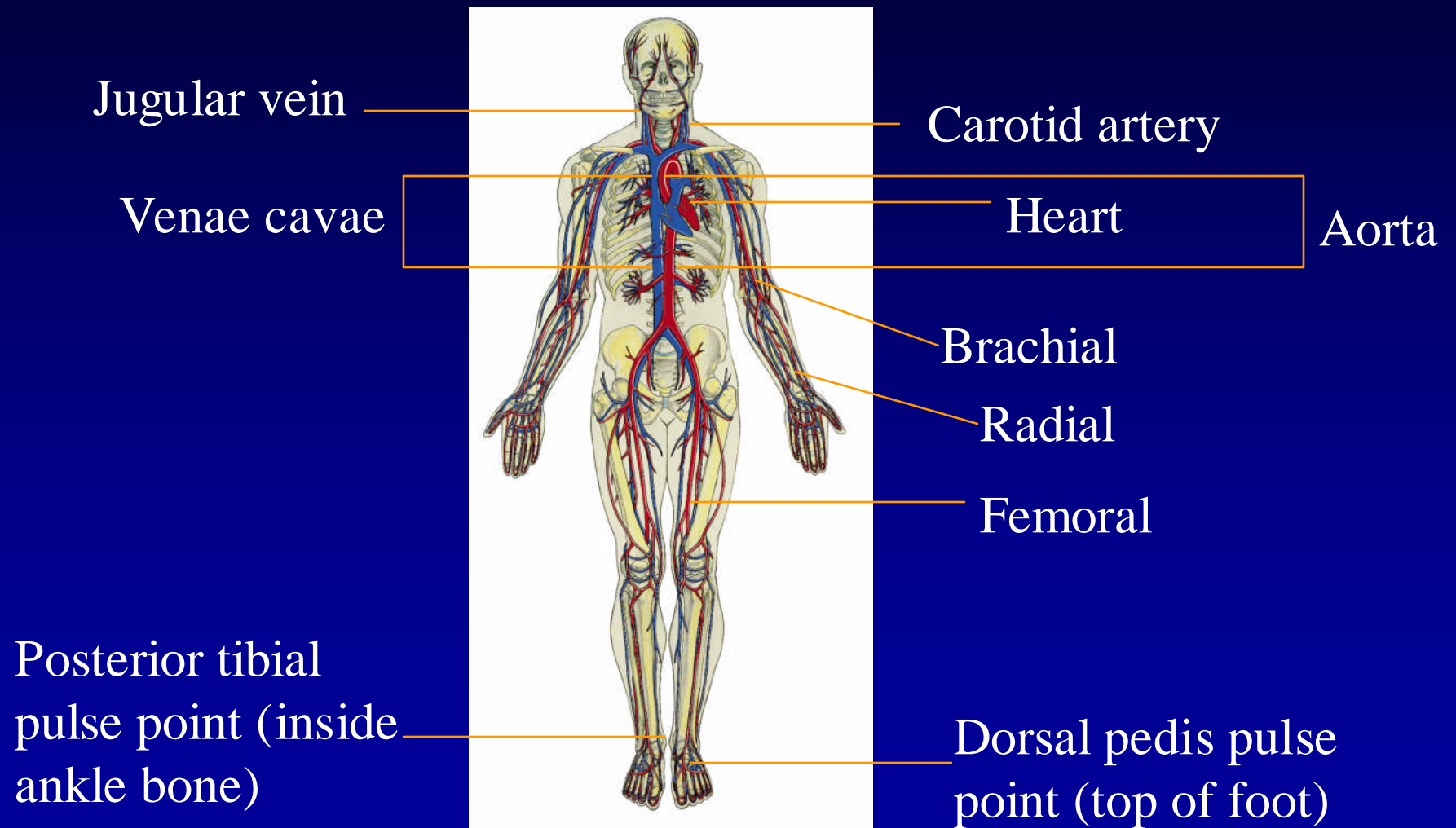
Exchange of Gases



Exchange of Gases



Circulatory System



Jugular vein

Carotid artery

Venae cavae

Heart

Aorta

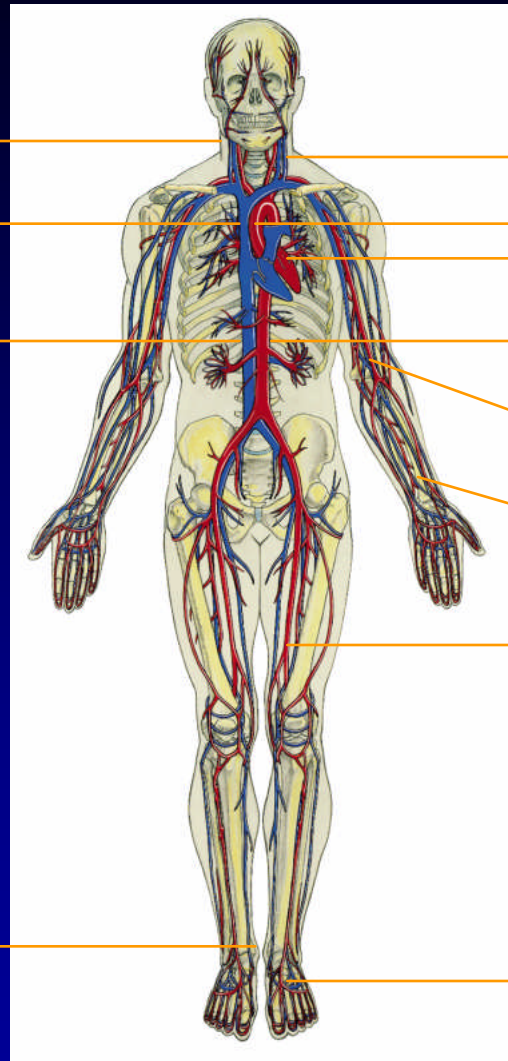
Brachial

Radial

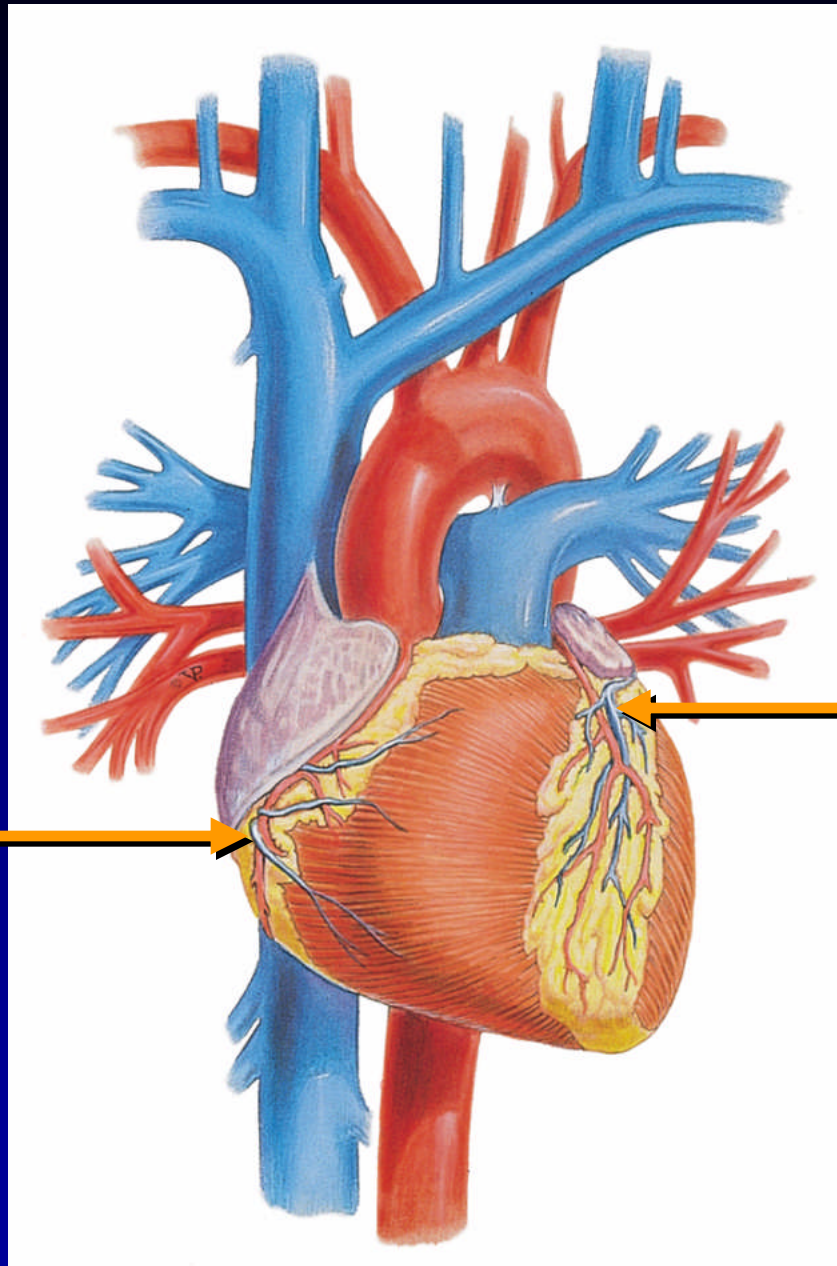
Femoral

Posterior tibial
pulse point (inside
ankle bone)

Dorsal pedis pulse
point (top of foot)



Right
coronary
artery



Left
coronary
artery

Respiratory Distress

- Hypoxia
- Airway obstruction
- Rapid, deep, or irregular breathing
- Straining to breathe
- Cyanosis

Circulatory System Failure

- Angina
- Acute Myocardial Infarction (AMI)

Signs and Symptoms of AMI

- Chest pain
- Difficulty breathing
- Profuse sweating
- Nausea or vomiting
- Irregular pulse
- Weakness
- Cool, pale, moist skin

Signs and Symptoms of Stroke

- Weakness, numbness, paralysis to one side
- Blurred or decreased vision
- Speech impairment
- Dizziness
- Sudden, severe headache
- Deviation of pupils